

KODAK DIGITAL ROC Professional Plug-In 2.1

Installing Kodak's DIGITAL ROC Professional Plug-In

If you have not downloaded and installed DIGITAL ROC Professional, go to:

<http://www.asf.com/download/>

Download the installer (or install from Kodak Plug-In CD) to your operating system (Mac or Windows)

Close all image editor programs while installing the software.

Run the DIGITAL ROC Professional installer.

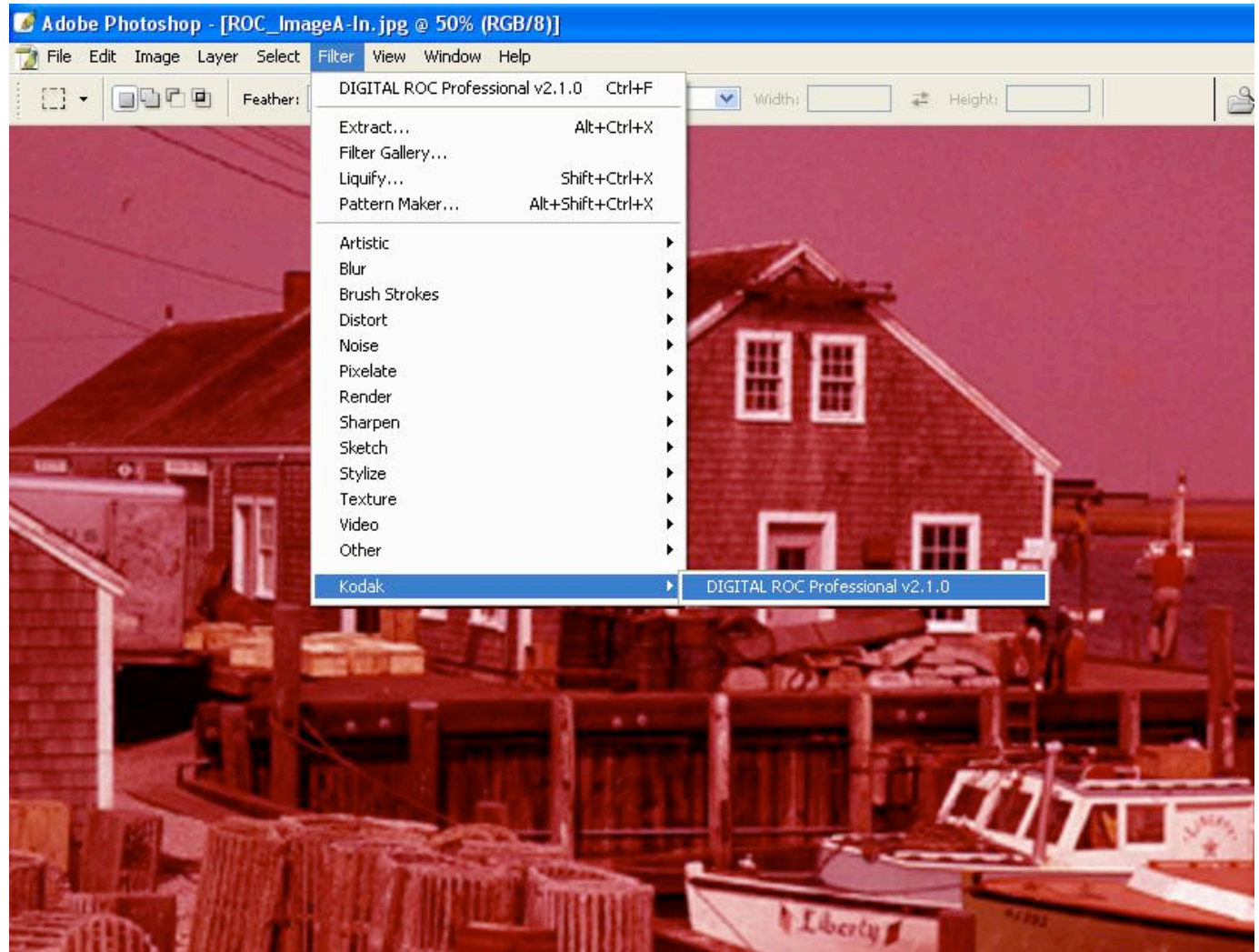
This will install a trial version of our Plug-Ins so they are available in a Photoshop Plug-In compatible image editor.

The only difference between the trial version and the registered version is the trial version places a watermark on your images after you have run the Plug-In. Once you register the trial version the Plug-In will no longer put the watermark on your images. It is important that you do not save over the original with a watermarked image. The watermark cannot be removed from a saved image.

Open your image editor and open an image to edit. In order for the DIGITAL ROC Professional to work the image must be at least 480 by 480 pixels. If your image is smaller than this you can change the image size to the minimum. If you need a smaller image resize the image to your requirements after you use the Plug-In.

Starting KODAK DIGITAL ROC Professional Plug-In

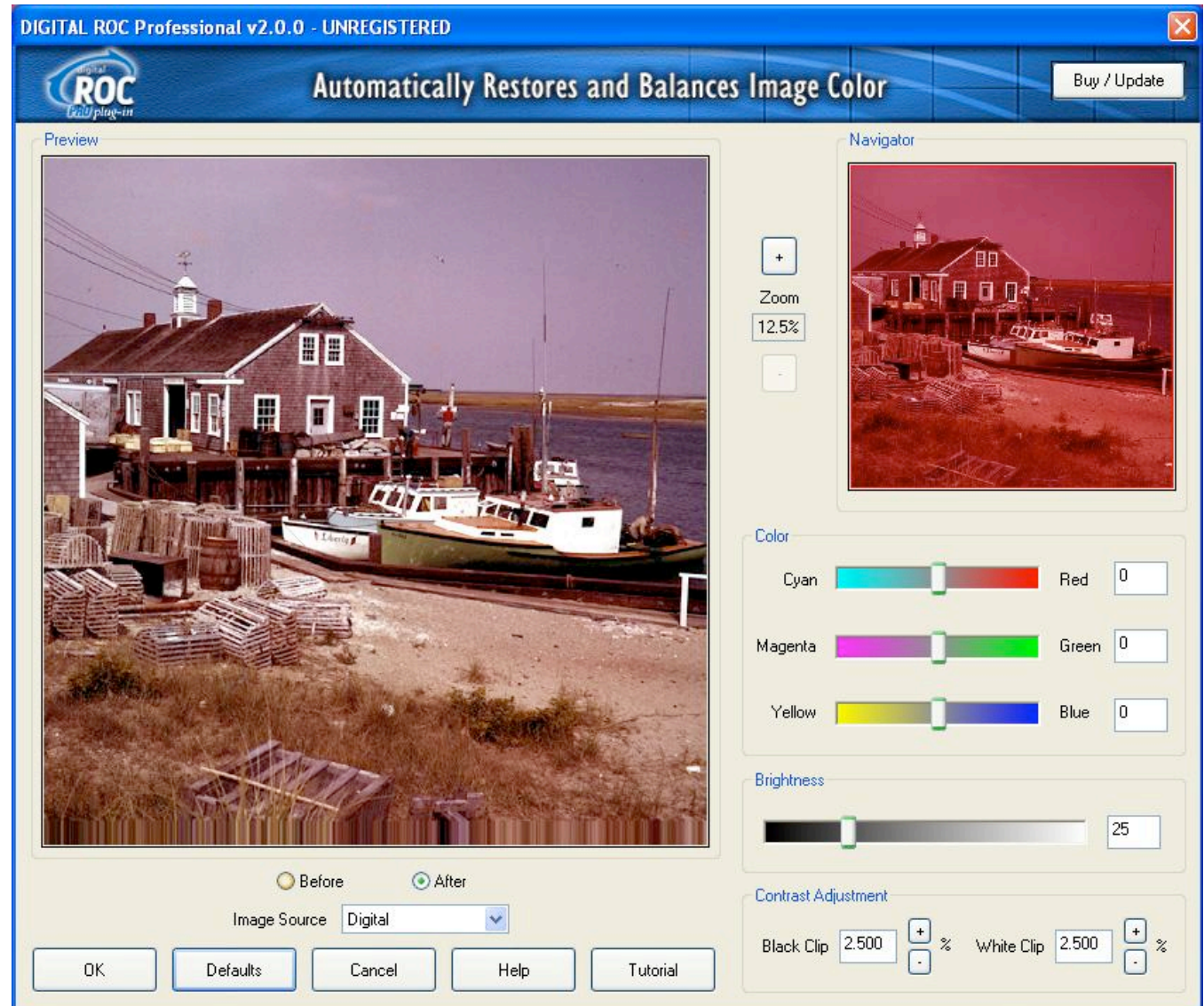
Once your image is open, start the DIGITAL ROC Professional Plug-In. This slide shows how to start the plug-in with Photoshop CS. Go to the Filter menu and click on Filter and point to Kodak, then select the plug-in from the list of KODAK Plug-Ins that are available.



KODAK DIGITAL ROC Professional Plug-In Interface

This is the Plug - In interface. The window opens with your image so that you can begin editing.

The Buy/Update Button opens the registration window. The next slide shows how to work with the registration.



Registering KODAK DIGITAL ROC Professional Plug-In

Click on **Purchase Online** which takes you through a process to purchase the DIGITAL ROC Professional Plug-In.

Once you have purchased you will be sent an email with your Serial Number. Be sure to save your Serial Number in case of a system crash or moving to a new system. You can print out your registration information at the time of purchase and file it away. Also keep the password you used to sign in.

Once your Plug-In is registered, you can check for updates (which are free) and upgrades by clicking on the **Check for Update** button.



The image shows a dialog box titled "Enter Registration Information" with a blue header and a close button (X) in the top right corner. The dialog box contains the following text and controls:

- Text: "If you need to obtain a Serial Number, you may:"
- Button: "Purchase Online" (located to the right of the text)
- Text: "Enter the Serial Number you received via email from Kodak when you purchased:"
- Text: "Serial Number:" followed by a text input field.
- Buttons: "Check for Update", "OK", and "Cancel" (located at the bottom of the dialog box).

KODAK DIGITAL ROC Professional Plug Navigator and Preview Windows

The smaller image in the Plug-In window is a **Navigator** window that includes a red box. The Navigator window displays the entire image to be processed

This area inside the red box is what is displayed in the larger **Preview** window

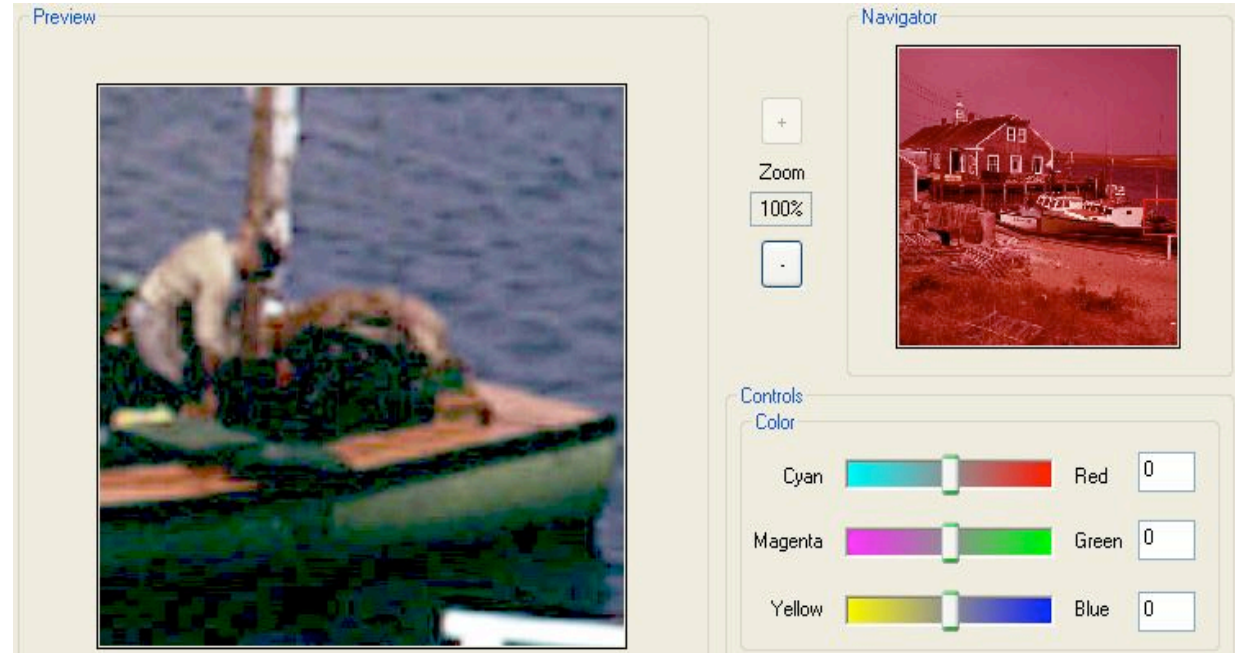
You can zoom in to 100% to see what effect the Plug-In is having on your image.

To move the red box, click and drag the the mouse or by clicking a different area inside the Navigator window.

You can change the size of the navigator box using the Zoom In and Zoom Out buttons.

When you **Zoom In** (+) your image displayed in the Preview becomes more magnified

When you **Zoom Out** (-) your image displayed in the Preview becomes less magnified (showing the full image)



KODAK DIGITAL ROC Professional Plug-In Controls

At any time you can reset all of the adjustments to their original position by clicking the **Default** button.

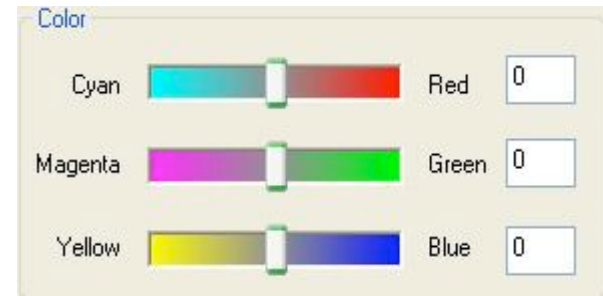
If your image is from scanned film set the **Image Source** to **Film**, otherwise set it to **Digital**. If the image source is unknown then its recommend you choose Digital (default).



The Color Controls allow you to fine tune the color balance of the automatic result of the Digital ROC Professional Plug-In process. Each color axis, Red-Cyan, Green-Magenta, and Blue-Yellow, has a slider and an edit box.

Moving the sliders toward a color will add more of that color to the image. The color strips under the sliders show generally how the colors change with different slider settings, and the edit box next to the slider shows the exact value of the slider setting.

The right half of the sliders (red, green, and blue) has positive values from 0 to 25. The left half of the sliders (cyan, magenta, and yellow) has negative values from 0 to -25. You can type a value directly in the edit box, the sliders are updated after a short delay.



KODAK DIGITAL ROC Professional Plug-In Controls

Brightness Slider



The brightness slider allows the user to brighten the image. This example shows the brightness increased to 50. The brightness slider ranges from 0 to 100 with 25 being the default setting. When the slider is positioned at 0, there will be no brightness processing. As the slider is moved to the right, the amount of brightness processing increases. The brightness slider edit box displays the current value of the brightness slider, and allows you to type in the level of brightness you would like without having to move the slider.

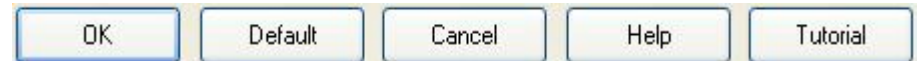
Contrast Controls



The DIGITAL ROC Professional Plug-In controls overall image contrast by providing clipping point level adjustment at both, the black end (shadows) and the white end (highlights) of the image data. The minimum value for the black and white clip points is 0%, and the maximum is 25%. When the black clip point value is increased, more image data is clipped to black, which is also true for the white clip point value. Therefore, by increasing the clip point values at each end, you are increasing the overall contrast of the image. By default, both clip point values are set to 2.5%.

KODAK DIGITAL ROC Professional Plug-In Buttons

OK Button – This button closes the Plug-In window and process your image with the current settings of the controls. Once you have applied the Plug-In you can go to Edit>Fade to reduce the effect your image editor. This will give you the similar type of adjustment you get with the Blending Slider inside the Plug-In.



Default Button - This button sets the KODAK DIGITAL GEM Airbrush Professional Plug-In slider controls back to the default values.

Cancel Button - This button closes the Plug-In window without making any changes to your image.

Help Button - This button launches your default browser to display the help document.

Tutorial Button - This button launches your default browser to display the Tutorial document.