

KODAK DIGITAL SHO Professional Plug-in 2.1

Installing the KODAK DIGITAL SHO Professional Plug-In

If you have not downloaded and installed KODAK DIGITAL SHO Professional Plug-In, go to

<http://www.asf.com/download/>

Download the installer (or install from KODAK Plug-In CD) to your operating system (Mac or Windows)

Close all image editor programs while installing the software.

Run the KODAK DIGITAL SHO Professional Plug-In installer. This will install a trial version of our Plug-Ins so they are available in a Photoshop Plug-In compatible Image editor.

The only difference between the trial version and the registered version is the trial version places a watermark on your images after you have run the Plug-In. Once you register the trial version the Plug-In will no longer put the watermark on your images. It is important that you do not save over the original with a watermarked image. The watermark cannot be removed from a saved image.

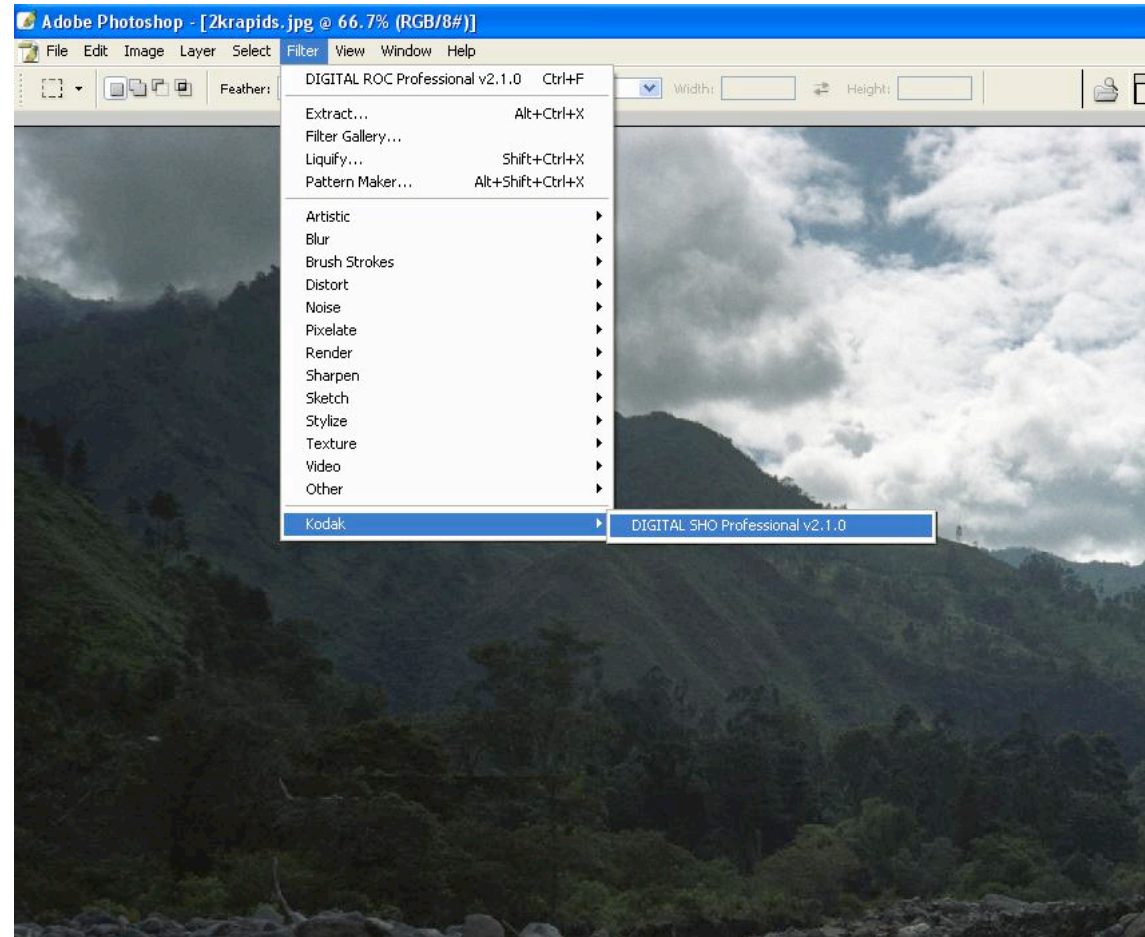
First open an image to edit. In order for the KODAK DIGITAL SHO Airbrush Professional Plug-In to work, the image must be at least 350 by 350 pixels. If your image is smaller than this you can change the image size to the minimum. If you need a smaller image resize the image to your requirements after you use the Plug-In.

Starting KODAK DIGITAL SHO Professional Plug-in

Once your image is open, start the KODAK DIGITAL SHO Professional Plug-in.

This slide shows how to start the plug-in with Photoshop CS.

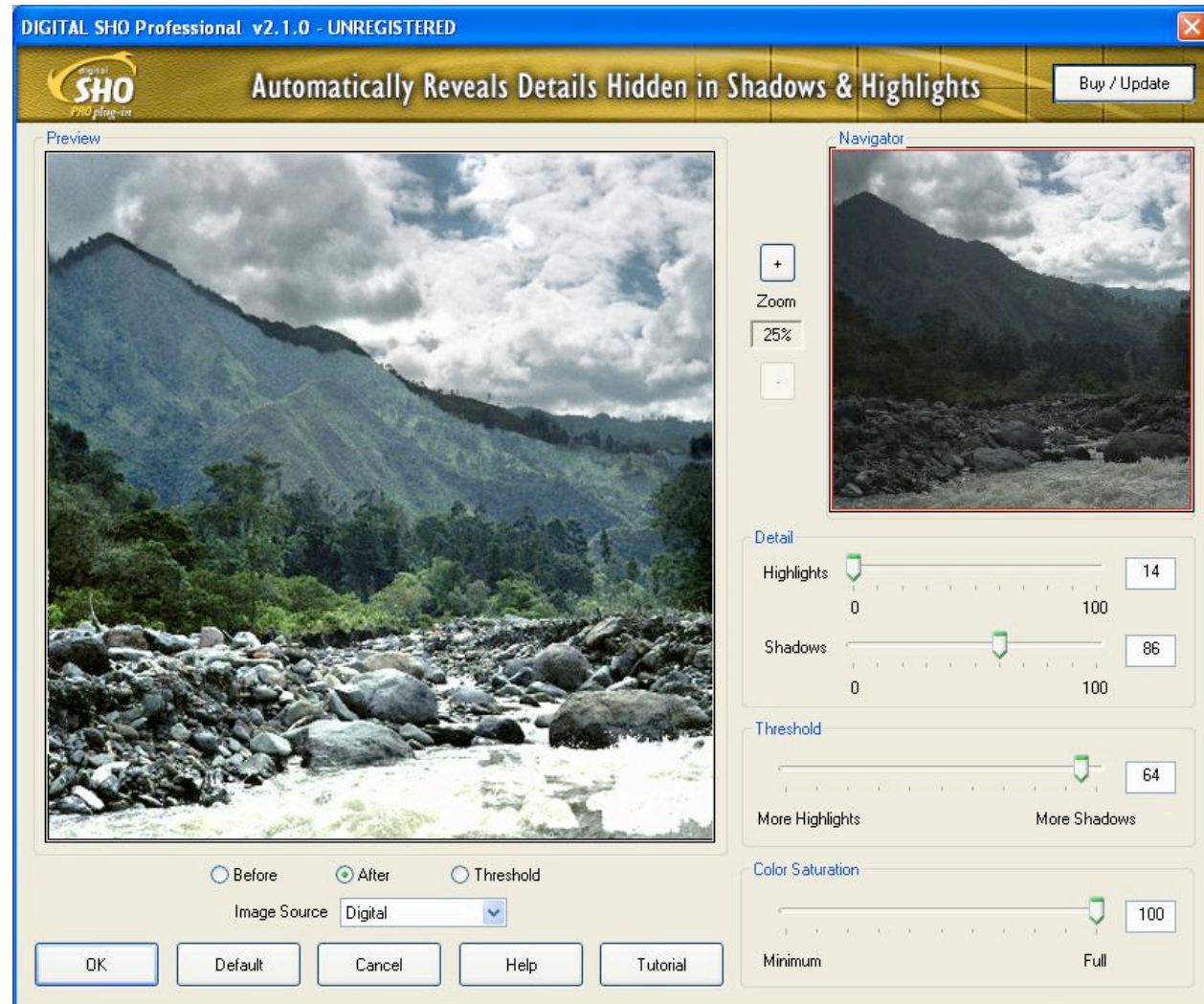
Go to the Filter menu and click on Filter and point to Kodak, then select the plug-in from the list of KODAK Plug-Ins that are available.



KODAK DIGITAL SHO Professional Plug-in Interface

This is the Plug - In interface. The window opens with your image so that you can begin editing.

The **Buy/Update** Button opens the registration window. The next slide shows how to work with the registration.



Registering KODAK DIGITAL SHO Professional Plug-in

Click on **Purchase Online** which takes you through a process to purchase the DIGITAL SHO Professional Plug-In.

Once you have purchased you will be sent an email with your Serial Number. Be sure to save your Serial Number in case of a system crash or moving to a new system. You can print out your registration information at the time of purchase and file it away. Also keep the password you used to sign in.

Once your Plug-In is registered, you can check for updates (which are free) and upgrades by clicking on the **Check for Update** button.

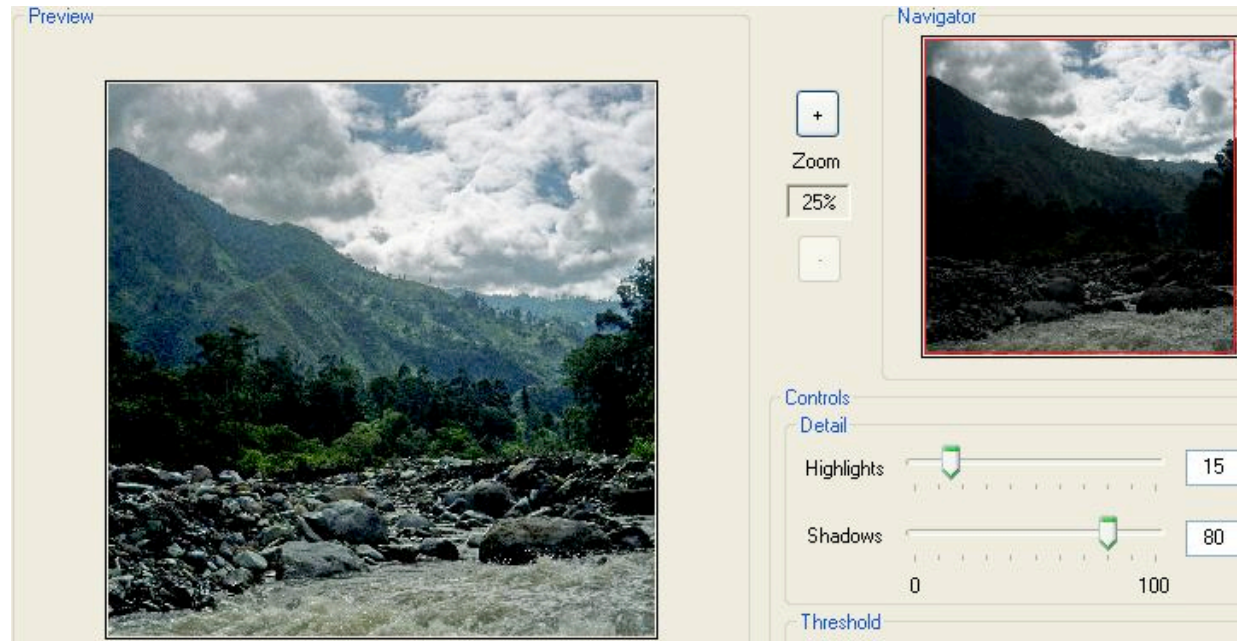


The image shows a software dialog box titled "Enter Registration Information". The dialog has a blue title bar with a close button (X) in the top right corner. The main content area is light gray and contains the following elements:

- A text label: "If you need to obtain a Serial Number, you may:"
- A button labeled "Purchase Online" positioned to the right of the text label.
- A text label: "Enter the Serial Number you received via email from Kodak when you purchased:"
- A text label: "Serial Number:" followed by a white text input field.
- At the bottom of the dialog, there are three buttons: "Check for Update" on the left, "OK" in the center, and "Cancel" on the right.

KODAK DIGITAL SHO Professional Plug-in Navigator and Preview Windows

The smaller image in the plug-in window is a Navigator window that shows what is displayed in the larger Preview image. You can zoom in up to 100% to judge what effect the plug-in is having on your image.



When you use the Zoom in Button (+) to change navigator box the image displayed in the Preview Window will magnify a smaller portion of the image, up to pixel by pixel (100%).

When you use the Zoom out Button (-) to change navigator box the image displayed in the Preview Window magnify less of the image up to showing the full image.

When the radio button is on After, you can click on the Navigator image to see the before. This lets you quickly switch between the before and after images.

KODAK DIGITAL SHO Professional Plug-in Controls

At any time you can reset all of the adjustments to their default positions by clicking the **Default** button. The options you choose will remain changed as long as you click OK and apply the changes.

If you click **Cancel** the settings will revert to the setting in place when you last opened the Plug-In.

If your image is from a scanned photographic film set the Image Source to **Film**, otherwise set it to **Digital**.

If the image's source is unknown, then we recommend you choose the default option (Digital).

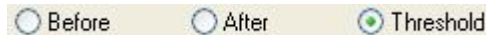
Although the two settings were designed for Digital and Film sometimes the film setting works best on digital and sometimes the digital setting works best on scanned.



You can visually identify which parts of the image are considered shadow or highlight by clicking on the Threshold button. The plug-in will lighten shadows and darken highlights.

The plug-in will lighten shadows and darken highlights. Adjust the Threshold slider to change which parts are shadows and which parts are highlights. The window will visually confirm shadow and highlight differences. Using the buttons under the preview image you can choose between Before, After and Threshold.

Once you identify shadows and highlights switch the radio button back to After.



KODAK DIGITAL SHO Professional Plug-in Controls

It is best to run any color correction like Kodak's DIGITAL ROC or DIGITAL ROC Professional before running KODAK DIGITAL SHO Professional. It is also very important not to make any brightness or contrast changes until after you run Kodak's DIGITAL SHO Professional.

Next determine how much detail you want to bring out of the **Shadows**.

Moving the Shadows slider to the right continues to brighten the shadows. Underexposed areas (shadows) are noisier (grainer) than properly exposed areas. As you bring details out of the shadows you may see more noise. With the default settings the noise is *generally* not too objectionable. If the noise becomes too severe use a noise removal program like KODAK DIGITAL GEM or DIGITAL GEM Professional.

You will see more detail in the highlights by moving the **Highlights** slider to the right. Bringing the details out of the shadows causes them to be brighter and more color saturated. If the color is too bright you can use the

Color Saturation slider to reduce the amount of the increased color. Reducing the Color Saturation slider reduces proportionally the amount of color that was added. In other words, areas that are not affected by the plug-in will not change color saturation, areas that are changed slightly will be slightly changed and areas that are significantly changed will be significantly changed by the slider.



Kodak's DIGITAL SHO Professional Plug-in Controls

OK Button – This button will close the plug-in window and process your image with the current settings of the controls. Once you have applied the plug-in you can go to Edit > Fade to reduce the effect your image editor.

Default Button - This button sets the DIGITAL SHO Professional Plug-In slider controls back to the default values.

Cancel Button - This button will close the plug-in window without making any changes to your image.

Help Button - This button will launch your default browser to display the help document.

Tutorial Button - This button will launch your default browser to display the Tutorial document.

